

2022



# Accessories for the Touareg





# Accessories for the Touareg



The Touareg is not just an SUV. It is a thoroughbred SUV that impresses with its powerful and distinctive entrance, its sporty elegance and innovative premium comfort. And last but not least, with a variety of customisation options.

The following vehicle-specific accessories have been specially tailored to your Touareg. Equally as perfectly fitting, yet modelindependent universal accessories can be found from page 10 onward.



## Vehicle-specific Accessories

- 03** Sport and Design
- 04** Transport
- 05** Comfort and Protection
- 07** Wheels
- 08** Product Overview

## Universal Accessories

- 12** Sport and Design
- 16** Communication
- 22** Transport
- 34** Comfort and Protection
- 48** Wheels





**01** A feature that has what it takes. The **Volkswagen Genuine chrome-look rear protective strip** on your Touareg is both an attractive feature and also provides effective protection. The sensitive rear section of your vehicle is therefore well protected against scratches and paint damage. The rear protective strip is simply glued to the lower edge of the boot lid.

<sup>1</sup> Not for Plug-in hybrid vehicles.



**02** An unforgettable entrance – everywhere, every time. **Volkswagen Genuine running boards<sup>1</sup>** underline the SUV look of your Touareg, making it easier to both get in and load the roof. Not suitable for the plug-in hybrid.



01

**01-02** Take everything you need with you in your Touareg. **Volkswagen Genuine cross bars**<sup>1</sup> (01) made of aerodynamically shaped aluminium profiles for the roof railing form the base for the quick and stable fitting of all roof attachments. The retrofit removable (not shown) or fixed (02) **Volkswagen Genuine towing bracket** including 13-pin electrical installation kit provides a perfectly coordinated complete package. The ideal base for bicycle carriers or boat trailers.

## NOTE

You will find our roof attachments in the universal accessories section from page 26 upwards.



02



# Comfort and Protection



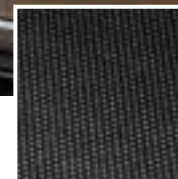
**NOTE**  
Before starting off, ensure that any load is properly secured in the luggage compartment.

01

**01-02** Practical packing, worry-free transport. Benefit from our knowledge and expertise when it comes to transporting your belongings in the luggage compartment of your Touareg. We always keep an eye on what you need with our luggage compartment solutions. The **Volkswagen Genuine luggage compartment tray (01)** with Touareg lettering and the **Volkswagen Genuine reversible floor covering with load sill protection (02)** combine practical benefits, protection, convenience and quality.



02



02

## DETAIL

Once turned, the sturdy plastic studs on the rear side of the reversible floor covering fix it into place so it can protect your vehicle from even heavy dirt and loads.

# Comfort and Protection



**01-02** Optimum protection – around town or in the country. The practical **Volkswagen Genuine load sill protection** (01) is made of transparent film and prevents damage when loading and unloading. It is simply glued to the load sill of the rear bumper. Protect your Touareg and the vehicle behind from flying dirt, hazardous stones and spray with these extremely hard-wearing **Volkswagen Genuine mudflaps** (02).



**03-04** In line with the principle "It's what's inside that matters", Volkswagen Accessories places great emphasis on the protection of the interior of your vehicle. Tailor-made **Volkswagen Genuine "Premium" textile floor mats** (03) made of hard-wearing velour feature Touareg lettering on the front mats. Hard-wearing **Volkswagen Genuine all-weather floor mats** (04) with Touareg lettering on the front mats keep dirt and moisture in check all year round.



## Summer alloy wheels



**"Sebring", 19-inch**  
Grey Metallic



**"Braga", 20-inch**  
Dark Graphite Matt



**"Nevada", 20-inch**  
Black, diamond-turned



**"Nevada", 20-inch**  
Black

## Winter alloy wheels



**"Corvara", 17-inch**  
Brilliant Silver



**"Merano", 18-inch**  
Brilliant Silver



**"Merano", 18-inch**  
Adamantium Dark Metallic

Further accessories for your wheels, including valve caps, wheel bolt locking sets, tyre bag sets and snow chains, can be found in the universal accessories section on page 49.

The requirements of the current ABE (German type approval) or of current certification must be complied with. Please use the standard-fit wheel bolts provided. Please ensure that the load index (LI) of the selected tyres is not lower than the LI specified in the vehicle documents or CoC papers. All winter alloy wheels are treated with an especially resistant coating to ensure that they are suitable for use in winter.

# Product Overview **Touareg**



Heading	Page	Article name	Article number	Price
<b>Sport and Design</b>	03	<b>Rear protective strip, chrome-look</b>	760-071-360	
	03	<b>Running boards<sup>1</sup></b> , colour: Silver anodised, fitting time approx. 250 TU	761-071-691	
<b>Transport</b>	04	<b>Cross bars</b> , only in conjunction with roof railing, 1 set = 2x	760-071-151	
	04	<b>Towing bracket</b>		
		- Removable, including 13-pin electrical installation kit, for vehicles without factory-fitted preparation, approx. fitting time 500 TU	760-092-150	
		- Swivelling, including 13-pin electrical installation kit, without factory-fitted preparation, approx. fitting time 500-550 TU	760-092-160	
<b>Comfort and Protection</b>	05	<b>Luggage compartment tray</b> , with vehicle lettering, for variable luggage compartment floor	760-061-161	
	05	<b>Reversible floor covering</b> , with load sill protection	760-061-210	
	06	<b>Load sill protection film</b> , transparent	760-061-197	
	06	<b>Mudflaps</b>		
		- For the front, 1 set = 2x	760-075-111	
		- For the rear, 1 set = 2x	760-075-101	
	06	<b>"Premium" textile floor mats</b> for the front and rear, with vehicle lettering at the front, 1 set = 4x	761-061-270- -WGK	
	06	<b>All-weather floor mats</b>		
		- For the front, with embossing, 1 set = 2x	761-061-502- -82V	
		- For the rear, 1 set = 2x	760-061-512- -82V	
	- For the front, with embossing, and rear, 1 set = 4x	761-061-500- -82V		

<sup>1</sup> For vehicles up to production date week 27/2020.



Heading	Page	Article name	Article number	Price
<b>Wheels</b>		<b>Summer wheels</b>		
	07	<b>19-inch "Sebring"</b> , Grey Metallic, 8.5 J x 19, ET 28, LK 112/5	760-071-499- -Z49	
	07	<b>20-inch "Braga"</b> , Dark Graphite Matt, 8.5 J x 20, ET 33, LK 112/5	760-071-490- -2XF	
	07	<b>20-inch "Nevada"</b> , Black, diamond-turned, 9.0 J x 20, ET 33, LK 112/5	760-071-490-A -FZZ	
	07	<b>20-inch "Nevada"</b> , Black, 9.0 J x 20, ET 33, LK 112/5	760-071-490-A -AX1	
		<b>Winter wheels</b>		
	07	<b>17-inch "Corvara"</b> , Brilliant Silver, 7.5 J x 17, ET 18, LK 112/5	760-071-497- -8Z8	
	07	<b>18-inch "Merano"</b> , Brilliant Silver, 8.0 J x 18, ET 25, LK 112/5	760-071-498- -8Z8	
	07	<b>18-inch "Merano"</b> , Adamantium Dark Metallic, 8.0 J x 18, ET 25, LK 112/5	760-071-498- -DM9	

More universal accessories for your Touareg can be found from page 182 onwards.

# Universal **Accessories**





Sporty, practical or smart – with our universal accessories, you can equip your Volkswagen in line with your personal taste. The universal accessories are not specific to particular models, but are designed to fit perfectly in a number of models. Of course with the consistent brand quality expected from Volkswagen Accessories.



## 12 Sport and Design

- Interior
- Exterior



## 16 Communication

- Infotainment
- Communication



## 22 Transport

- Carrier systems
- Roof attachments
- Luggage security



## 34 Comfort and Protection

- Luggage compartment systems
- Comfort
- Protection
- Child seats and accessories
- Service
- Vermin repellent



## 48 Wheels

- Accessories
- Snow chains



Select the desired chapter



Back to content

# Sport and Design





**01-02** Why not show what you have? Add a dash of individuality to your Volkswagen with the flush yet curved **Volkswagen Genuine "Wolfsburg crest" badge** (01) in black/chrome. The set includes two badges. Make a real statement with the **Volkswagen Genuine LED logo light** (02). When you open the front doors, the Volkswagen logo is projected directly onto the ground, providing greater brightness when getting in and out of the car, and an added optical extra.

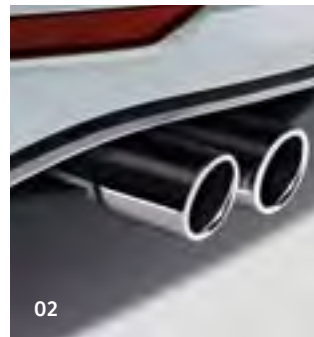


# Sport and Design



01

**01-03** The high-quality design of the brushed stainless steel **Volkswagen Genuine pedal cap set<sup>1</sup>** (01) is guaranteed to impress, featuring a non-slip coating for good grip. The bevelled modern shape of the stainless steel **Volkswagen Genuine rear silencer trim<sup>1</sup>** in chrome-silver (02) or chrome-black (03) enhances the powerful good looks of your vehicle. A sporty look that's fun, and also enhances your Volkswagen optically.



02



03



# Product Overview **Sport and Design**

Heading	Page	Article name	Article number	Price
<b>Interior</b>	14	<b>Pedal cap set, 'Grip' design, only for the Beetle, Beetle Cabriolet and Scirocco</b>		
		- For manual gearboxes, approx. fitting time 100 TU	1K1-064-200-A	
		- For automatic and dual clutch gearboxes, approx. fitting time 100 TU	1K1-064-205-A	
	14	<b>Pedal cap set, ribbed design, not for the up!, ID.3, ID.4, Beetle, Beetle Cabriolet, Scirocco, Sharan, Touareg</b>		
		- For manual gearboxes, approx. fitting time 100 TU	5G1-064-200	
		- For automatic and dual clutch gearboxes, approx. fitting time 100 TU	5G1-064-205	
	13	<b>LED logo light, only for vehicles with existing door warning/entry lights, for front door trim, approx fitting time 25 TU</b>		
		- With the old Volkswagen logo	000-052-120-B	
		- With the new Volkswagen logo	000-052-120-F	
<b>Exterior</b>	13	<b>"Wolfsburg Crest" badge, universal use, 1 set = 2x</b>	5C0-064-317-AS -XRW	
	13	<b>Rear silencer trims</b>		
		- Chrome, for tailpipe diameter 1 x 65 mm, for the Beetle, Beetle Cabriolet and Touran	000-071-911-A -CH9	
		- Chrome, for tailpipe diameter 1 x 60 mm, for the Beetle, Beetle Cabriolet, Scirocco, Touran and Tiguan Allspace	000-071-913-A -CH9	
		- Chrome, for tailpipe diameter 2 x 76 mm, for the Touran	5C5-071-911-C	
	- Black, for tailpipe diameter 2 x 76 mm, for the Touran	5G0-071-911- -041		

This table shows the available options with the individual products and our current vehicle models. Please contact your Volkswagen dealership for more information as to whether the options can be installed on your particular vehicle. The specified fitting times are guidelines, 100 TU (time units) correspond to one hour. The prices listed do not include installation costs. Valid from January 2022.

# Communication





**01-03** Never lose the connection. That will never happen to you with the high-grade **USB Premium connection cables** (01). Use the specially developed cables to connect your smartphone to your Volkswagen's Infotainment system, and make use of functions, such as CarPlay™<sup>1</sup> in AppConnect. Your device is charged at the same time. Refer to page 21 for an overview of connector versions and cable lengths. Practical little helpers that make driving more pleasant. The **Volkswagen Genuine DUCI** (Double USB Charger Insert) (02) with 2 x 2.4 amps lets you charge your mobile devices quickly and conveniently using two USB ports. Simply insert it into the cigarette lighter or a 12 V socket and you're done. The universal **"Smartfit Evolution" smartphone holder**<sup>2</sup> (03) with 3D-ball joint and flexibly adjustable retaining clamps means that your mobile phone is always in sight, for navigation and more.



<sup>1</sup> iPhone, iPod, iPad, iPad mini, iPad Air, Apple Lightning and CarPlay are registered trademarks of Apple Computer International. Galaxy Tab is a registered trademark of Samsung Electronics Co. Ltd. Android is a trademark of Google Inc.

<sup>2</sup> Do not operate your smartphone while driving.



**01-02** Be both seen and heard. The Volkswagen Accessories **Plug & Play sound system**<sup>1</sup> delivers rich sound into the interior of your vehicle. With a 300-watt sine-wave output and 480 watts of music as well as an impressive range of individual vehicle and driver-specific sound set-ups for pure audio enjoyment. The system can be installed in the spare wheel well (01) as well as in the luggage compartment for vehicles with a spare wheel (02).

<sup>1</sup> Refer to page 20 for an overview of all models. Please speak to your Volkswagen dealership about compatibility with your vehicle.

# Communication



**03-07** The **AppConnect activation document<sup>1</sup>** for **MIB Standard** and **MIB2 Entry (03-04)** brings MirrorLink™, Apple's CarPlay™<sup>2</sup> function and Google's Android™<sup>2</sup> function to the touchscreen of your Volkswagen Infotainment system for vehicles from model year 2016 onwards. The **Dynamic Road Sign Display activation document<sup>1,3</sup>** (05) ensures that road signs are recognised by the front camera. Up to three road signs are displayed in the instrument cluster and/or on the display of your navigation system. Following activation using the **Volkswagen voice control activation document<sup>1</sup>** (06), you can control the phone and radio features of the Composition Media radio, and also operate the Discover Media navigation system without taking your hands from the wheel. The **DAB+ extension<sup>1</sup>** (07) gives you digital radio reception with additional functions and texts in your Volkswagen – conveniently operated using the existing audio system and multifunction display. Simply connect external audio sources to listen to your own choice of tracks. The DAB+ extension is installed almost invisibly in the dash panel.



<sup>1</sup> Please enquire at your Volkswagen dealership whether the options can be installed on your particular vehicle.  
<sup>2</sup> iPhone, iPod, iPad, iPad mini, iPad Air, Apple Lightning and CarPlay are registered trademarks of Apple Computer International. Galaxy Tab is a registered trademark of Samsung Electronics Co., Ltd. Android is a trademark of Google Inc.  
<sup>3</sup> Please note the camera's limited field of vision and the limits of the system. Please follow the vehicle wallet precisely.



# Product Overview **Communication**

Heading	Page	Article name	Article number	Price
Infotainment	18	<b>Plug &amp; Play sound system<sup>1</sup></b> , for the Beetle, Beetle Cabriolet, Polo, Scirocco, T-Cross, T-Roc, Touran, Tiguan, Tiguan Allspace, Arteon, Golf, Passat		
		- For the spare wheel well, approx. fitting time 150 TU	000-051-419-B	
		- For the luggage compartment, approx. fitting time 150 TU	000-051-419-C	
	19	<b>Voice control for radio/navigation<sup>2</sup></b> , for the Polo, T-Cross, T-Roc, Golf Sportsvan, Beetle, Beetle Cabriolet, Scirocco, Touran, Tiguan Allspace, Sharan, approx. fitting time 30 TU		
		- For the 'Composition Media' radio	5G0-054-802	
		- For the 'Discover Media' navigation system	5G0-054-802-A	
	19	<b>DAB+ extension</b>		
		- For RCD510, RNS315/510	000-063-212-B	
		- For RCD310	000-063-212-C	
		- For MIB-Standard / MIB High Gen 1 & Gen 2	000-063-212-E	
17	<b>DUCL, double USB charging adapter</b> , not for the ID.3 and ID.4	000-051-443-D		
17	<b>"Smartfit Evolution" smartphone holder</b> , can be rotated 360°, with suction cup fixing	000-051-435-AF		

<sup>1</sup> For vehicles up to model year 2020.

<sup>2</sup> Only in conjunction with the Composition Media radio or Discover Media navigation function. Please talk to your Volkswagen dealership about compatibility.

<sup>3</sup> Use depends on the vehicle equipment.

<sup>4</sup> Please note the camera's limited field of vision and the limits of the system. Please follow the vehicle wallet precisely.

Heading	Page	Article name	Article number	Price
	17	<b>USB Premium connection cable, universal<sup>3</sup></b>		
		- USB-A to Micro-USB 30 cm	000-051-446-AQ	
		- USB-A to Apple Lightning 30 cm	000-051-446-AR	
		- USB-A to USB-C 30 cm	000-051-446-AS	
		- USB-A to Micro-USB 70 cm	000-051-446-AT	
		- USB-A to Apple Lightning 70 cm	000-051-446-BN	
		- USB-A to USB-C 70 cm	000-051-446-BP	
		- USB-C to Micro-USB 30 cm	000-051-446-AB	
		- USB-C to Apple Lightning 30 cm	000-051-446-AC	
		- USB-C to USB-C 30 cm	000-051-446-AD	
		- USB-C to USB-A port 30 cm	000-051-446-AE	
		- USB-C to Micro-USB 70 cm for MIB2 Standard navigation	000-051-446-BA	
		- USB-C to Apple Lightning 70 cm	000-051-446-BB	
		- USB-C to USB-C 70 cm	000-051-446-BC	
		- USB-C to USB-A port 70 cm	000-051-446-BD	
	19	<b>AppConnect activation document</b> , for the Beetle, Beetle Cabriolet, Golf Sportsvan, Polo, Scirocco, Sharan, T-Cross, T-Roc, Tiguan Allspace, Touareg, Touran, approx. fitting time 30 TU		
		- For MIB2 Standard	5G0-054-830-A	
		- For MIB2 Entry	5G0-054-830-B	
	19	<b>Dynamic Road Sign Display activation document<sup>4</sup></b> , for MIB2 Standard navigation	5G0-054-809-A	

This table shows the available options with the individual products and our current vehicle models. Please contact your Volkswagen dealership for more information as to whether the options can be installed on your particular vehicle. The specified fitting times are guidelines, 100 TU (time units) correspond to one hour. The prices listed do not include installation costs. Valid from January 2022.

# Transport





**01** Volkswagen Accessories gives you the freedom to simply and conveniently take your bicycles with you. There is a wide range of bicycle carriers for the towing bracket to suit every requirement – and every bicycle. The lightweight **Volkswagen Genuine “Premium” bicycle carrier** (01) impresses with its innovative fixing and effortlessly simple assembly with its lever-free locking mechanism. It is ideal for transporting two bicycles or electric bicycles. The lightweight and compact folding **Volkswagen Genuine “Compact II” bicycle carrier** (pictured on page 24) carries two bicycles or electric bicycles weighing up to 60 kg and can conveniently be folded down using a large foot pedal to ensure that the boot lid remains accessible. Also available as the **Volkswagen Genuine “Compact III” bicycle carrier** (pictured on page 25) for three bicycles. The extendible **Volkswagen Genuine “Basic Flex” bicycle carrier** (pictured on page 25) for the towing bracket is ideal for transporting two or three bicycles. Thanks to the extra-large folding mechanism, the load compartment can also be opened even in vehicles with large tailgates. The extension set for a third bicycle means that it can be flexibly adapted to your needs. The **Volkswagen Genuine “Basic” bicycle carrier** (pictured on page 25) for the transport of two bicycles or electric bicycles impresses with extra low weight even under the maximum load. It can be folded down completely to a very small size and stowed away to save space. The **Volkswagen Genuine loading ramp** (01), which can be separated, is ideal for helping to conveniently push bicycles onto all Volkswagen Genuine bicycle carriers. A storage bag is included.



## SPECIAL FEATURES

**90° folding function:** The foot pedal enables the Volkswagen Genuine “Premium” and “Basic Flex” bicycle carriers to be folded out extra wide (02) so that the luggage compartment can still be accessed, even with vehicles with large tailgates.

To save even more space, the Volkswagen Genuine “Premium” and “Basic” bicycle carriers can be stowed in the spare wheel well of the Golf 7, Golf 7 Estate, Golf 8, Golf 8 Estate, Golf Sportsvan, Passat VIII Estate, Passat VIII Saloon and T-Roc during transport. We recommend using the optional mounting kit (not shown) to transport the bicycle carrier securely in the spare wheel well (03).



The bicycle carrier folds down completely (04) to a compact size for compact storage or storage in the luggage compartment.



The transport bag (05) is included in the scope of delivery for the “Compact II/III” bicycle carriers. The transport bag is available as an option for the “Premium” and “Basic” bicycle carriers.

# Bicycle carriers at a glance

## NOTE

Please note the drawbar load of the vehicle-specific towing bracket.

The standardised ex works FIX4BIKE connection can be used to attach your Volkswagen bicycle carrier for the towing bracket. This does not increase the payload.



Bicycle carriers for the towing bracket

Model	"Premium"	"Compact II"
Number of bicycles	2	2
Own weight [kg]	13	14
Max. load [kg]	60	60
Bicycle rail spacing	220 mm	220 mm
Wheel rail width	65 mm	55 mm
Max. axle spacing	1300 mm	1250 mm
Bicycle frame diameter	up to 75 mm round tube or 75 x 45 mm oval tube	up to 80 mm round tube or 80 x 45 mm oval tube
Dimensions [H x W x D] in cm	69 x 118 x 56	76 x 114 x 65
Folded dimensions [H x W x D] in cm	20 x 61 x 60	24 x 58 x 64
Foot pedal-activated folding function (also with bicycles)	●	●
Anti-theft protection, lockable	●	●
Number plate carrier with handle	●	●
Plug connection, 13-pin	●	●
Transport bag included in the scope of delivery	○	●
Removable frame carrier	●	○
Optional accessories	Loading ramp, transport bag, mounting kit	Loading ramp
Optional equipment	<ul style="list-style-type: none"> <li>- Lever-free assembly</li> <li>- Can be transported in the spare wheel well of certain vehicles</li> <li>- Large 90° folding angle, also for vehicles with large tailgates</li> </ul>	



"Compact III"	"Basic Flex"	"Basic"
3	2 (3 with optional extension)	2
16	14	12
54	60	60
190/180 mm	220 mm	220 mm
55 mm	55 mm	65 mm
1250 mm	1250 mm	1300 mm
up to 80 mm round tube or 80 x 45 mm oval tube	up to 75 mm round tube or 75 x 45 mm oval tube	up to 75 mm round tube or 75 x 45 mm oval tube
76 x 114 x 79	77 x 115 x 65	67 x 118 x 56
24 x 58 x 77	non-folding	20 x 61 x 60
●	●	○
●	●	●
●	●	●
●	●	●
●	○	○
○	●	●
Loading ramp	Extension kit for a third bicycle, loading ramp	Loading ramp, transport bag, mounting kit
	- Large 90° folding angle, also for vehicles with large tailgates	- Lever-free assembly - Can be transported in the spare wheel well of certain vehicles



# Bicycle holders at a glance



**01-02** There's now something on top – in a positive sense. Volkswagen Accessories bicycle carriers let you transport your bicycles with ease. The roof bars or cross bars provide the base for this. Transport your bicycles reliably, steadily and upright on the roof of your Volkswagen with the City-Crash-Plus-tested **Volkswagen Genuine bicycle carrier (01)**. The innovative torque limiter rotary knob controls the torque on the bicycle frame. This lightweight and attractive **fork-mounted bicycle carrier (02)** with a curving, aluminium wheel rail features an easily adjustable quick-fastening system for almost all types of bicycle forks.



## Bicycle holders for the vehicle roof

Model	Bicycle holder	Fork-mounted bicycle holder
Max. number of bicycles	1	1
Own weight [kg]	4.2	2.5
Max. load [kg]	20	17
Bicycle mount	Frame/wheel	Front wheel fork/rear wheel
Bicycle frame diameter	22-80 mm round tube / 80 x 100 mm oval tube	All
Suitable for tyre widths	3"	3"
Compatible with quick-release axles	All	20mm
Dimensions [L x W x H] in cm	145 x 32 x 9	110 x 22 x 12
Adjustable quick-action clamp for wheels	●	●
Lockable: Bicycle on bicycle carrier and carrier on roof bars/cross bars	●	●
Suitable for bicycles with disc brakes	●	●
Suitable for roof carriers with 20 x 20 mm T-grooves	●	●
Suitable for roof carriers with square profiles	○	●
Other	<ul style="list-style-type: none"> <li>- Rotary knob with integrated torque limiter for fast and easy attachment of the bicycle frame</li> <li>- Can be attached to the vehicle roof facing either direction</li> <li>- Easily moved without tools</li> </ul>	<ul style="list-style-type: none"> <li>- Can be attached to the vehicle roof facing either direction</li> <li>- T-groove adapter (20 x 20 mm) included</li> </ul>



01

## PRACTICAL

The practical pull-out function makes the ski and snowboard carrier very easy to load and unload.



01

**01-02** Off to the slopes. The lockable **Volkswagen Genuine "Comfort" ski and snowboard carrier (01)** with pull-out function lets you transport your valuable skis or wakeboard conveniently on the roof of your Volkswagen. Also available as the **Volkswagen Genuine "Basic" ski and snowboard carrier** (not shown) without pull-out function. The roof bars or cross bars provide the base for this. The handy **Volkswagen Genuine ski bag (02)** protects up to four pairs of skis and sticks when transporting them in a roof box or strapped in by the seat belts in the vehicle interior.



02





**03-04** Leisure time is calling – and Volkswagen Accessories has the right transport solutions for it. The **surfboard carrier** (03) transports your surfboard and its two-piece mast safely to its destination. Thanks to its moveable rubber supports, the **Volkswagen Genuine kayak carrier** (04) carries kayaks weighing up to 25 kg without bouncing or slipping.



# Roof boxes at a glance



Model	Volkswagen Genuine "Comfort 340" roof box	Volkswagen Genuine "Comfort 460" roof box	"Basic 340" roof box
Colour	Black, gloss	Black, gloss	Black, matt
Max. capacity [l]	340	460	340
Length, external [mm]	1900	2300	1900
Height [mm]	390	390	390
Width [mm]	750	750	750
Own weight [kg]	19	21	19
Load capacity [kg]	75	75	50
Mounting system	Pre-assembled quick release mechanism in T-groove rail	Pre-assembled quick release mechanism in T-groove rail	T-groove rail



**NOTE**

And with the innovative DuoLift system, the roof box can be opened easily from both sides (applies to the "Comfort 460" roof box).

"Basic 460" roof box	"Urban Loader" roof box
Black, matt	Black, matt
460	300-500 (variable)
2300	1408
390	259-517 (variable)
750	886
21	15
75	50
T-groove rail	U-shaped bracket

In vehicles with rod aerials, the aerial may come into contact with the roof box depending on the vehicle model and aerial length. The aerial may have to be unscrewed if necessary. Depending on the vehicle configuration or model selection, the roof box may collide with the boot lid when open due to the different lengths. Please pay attention to the vehicle-dependent load conditions.

# Product Overview **Transport**

Heading	Page	Article name	Article number	Price
<b>Carrier systems</b>	23	<b>"Premium" bicycle carrier for the towing bracket</b> , folding <sup>1,3,4</sup> , for two bicycles	000-071-105-J	
	23	<b>Loading ramp</b> , a loading aid for the "Premium", "Basic Flex", "Compact II", "Compact III" and "Basic" bicycle carriers	000-071-123	
	23	<b>"Compact II" bicycle carrier for the towing bracket</b> , folding <sup>1,2,4</sup> , for two bicycles	3C0-071-105-B	
	23	<b>"Compact III" bicycle carrier for the towing bracket</b> , folding <sup>1,2,4</sup> , for three bicycles	3C0-071-105-C	
	23	<b>"Basic Flex" bicycle carrier for the towing bracket</b> , folding <sup>1,4</sup> , for two bicycles	000-071-105-G	
	23	<b>"Basic Flex" extension kit</b> <sup>1</sup> , for a third bicycle	000-071-109-B	
	23	<b>"Basic" bicycle carrier for the towing bracket</b> <sup>1,3,4</sup> , for two bicycles	000-071-105-K	
	23	<b>Transport bag</b> , for the "Basic" and "Premium" bicycle carriers	000-071-226-A	
	not shown	<b>Mounting kit for the "Premium" and "Basic" bicycle carriers for the towing bracket</b>	000-071-705-A	
<b>Roof attachments</b> <sup>5</sup>	26	<b>Bicycle holder</b> , for 1 bicycle, max. load 20 kg	000-071-128-F	
	26	<b>Fork-mounted bicycle holder</b> , for 1 bicycle, max. load 17 kg	7M0-071-128-D	
	28	<b>Ski and snowboard carrier</b> <sup>5</sup>		
		- "Comfort", for four pairs of skis or two snowboards or one wakeboard, with pull-out function	000-071-129-AB	
		- "Basic", for four pairs of skis or two snowboards	000-071-129-M	
		- "Basic", for six pairs of skis or four snowboards	000-071-129-N	

<sup>1</sup> For a detailed overview of the weights, load capacities and dimensions, please see page 24.

<sup>2</sup> Transport bag included.

<sup>3</sup> Foldable for transport in the spare wheel well: Golf VII, Golf VII Estate, Golf VIII, Golf VIII Estate, Golf Sportsvan, Passat VIII Estate, Passat VIII Saloon and the T-Roc.

<sup>4</sup> Not suitable in conjunction with the towing bracket with aluminium ball head.

<sup>5</sup> Only for use with roof bars or cross bars. Please observe the maximum permissible roof load.

<sup>6</sup> For a detailed overview of the weights, load capacities and dimensions, please see page 30.



Heading	Page	Article name	Article number	Price
	28	<b>Ski bag</b> <sup>5</sup>	00V-061-202	
	29	<b>Surfboard carrier</b> <sup>5</sup> , for one surfboard with a two-piece mast	000-071-120-HA	
	29	<b>Kayak carrier</b> <sup>5</sup> , for one kayak up to 25 kg	1K0-071-127-A	
	30	<b>"Comfort" roof box</b> <sup>5,6</sup> , load capacity: 75 kg, high-gloss black		
		- "Comfort 340", dimensions: 1900 x 750 x 390 mm (L x W x H), volume: 340 l, weight: 19 kg	000-071-200-AD	
		- "Comfort 460", dimensions: 2300 x 750 x 390 mm (L x W x H), volume: 460 l, weight: 21 kg	000-071-200-AE	
	30	<b>"Basic" roof box</b> <sup>5,6</sup> , matt black		
		- "Basic 340", dimensions: 1900 x 750 x 390 mm (L x W x H), volume: 340 l, weight: 19 kg, load capacity: 50 kg	000-071-200	
		- "Basic 460", dimensions: 2300 x 750 x 390 mm (L x W x H), volume: 460 l, weight: 21 kg, load capacity: 75 kg	000-071-200-AC	
	31	<b>"Urban Loader" roof box</b> <sup>5,6</sup> , matt black, load capacity: 50 kg	000-071-200-AF	

This table shows the available options with the individual products and our current vehicle models. Please contact your Volkswagen dealership for more information as to whether the options can be installed on your particular vehicle. The specified fitting times are guidelines, 100 TU (time units) correspond to one hour. The prices listed do not include installation costs. Valid from January 2022.

# Comfort and Protection



# Comfort and Protection



**01-02** A clean affair. Quickly get rid of sweet wrappers and chewing gum papers and prevent them from flying around the inside of your Volkswagen in the **Volkswagen Genuine waste container** (01) for the cup holder. Safety first. This also applies to the luggage compartment of your Volkswagen. The **Volkswagen Genuine luggage compartment plug-in module**<sup>1</sup> (02) lets you flexibly partition your vehicle's luggage compartment, preventing goods from sliding around.

**03-04** Small and medium objects in the luggage compartment always remain fixed in place, thanks to the tear-resistant **Volkswagen Genuine luggage net**<sup>1</sup> (03). The energy-efficient (A++) **Volkswagen Genuine cool and thermos box** (04), which has a capacity of approximately 25 litres, helps to keep snacks and drinks at a perfect temperature at all times. The box connects to a 12 V/230 V socket in the car or home.

<sup>1</sup> Refer to page 46 for an overview of all models. Please enquire at your Volkswagen dealership whether the options can be installed on your particular vehicle.



# Comfort and Protection



**01-03** A tidy house, a tidy mind: also in your Volkswagen. **Volkswagen Genuine "Clean Solution" waste bag (01)**, which attaches to the headrest struts of the front seats to keep the interior of your vehicle clean and tidy. When a bag is taken out, a new one is automatically pulled into place. The **Volkswagen Genuine "Snakey" headrest hook<sup>1</sup> (02)** is a handy twin pack of organisers, which can be mounted onto the headrest struts of the front seats. The energy-efficient **Volkswagen Genuine LED reading lamp (03)** with adjustable swan neck and Volkswagen logo lets your passengers enjoy a comfortable and glare-free light when travelling in the dark. It is connected to the cigarette lighter or a 12 V socket.







**04-05** Your Volkswagen is designed to be comfortable. But you can make it even more comfortable – with well-thought-out Volkswagen Accessories. The “dfreeze®” auxiliary heater control (04) lets you conveniently control the auxiliary heater from your smartphone or online app, regardless of the distance. The speed of your Volkswagen can be simply maintained at the press of a button with the **Volkswagen Original cruise control system**<sup>1</sup> (05). A maximum speed can be fixed using the additional “Speed Limiter” function, which is then not exceeded, even at full throttle.

<sup>1</sup> Gradients and slopes may affect the performance of the cruise control system. Please take system limits into account.

## NOTE

One base, so many options: all the different modules can be mounted easily onto the base holder and flexibly swapped as required.



Interested in more ingenious ideas? No problem. The modular **travel and comfort system** enhances comfort for younger and older passengers in the passenger compartment. Tablet holders for various models and the folding table<sup>1</sup> provide a host of new possibilities for passing the time. The bag hook<sup>2</sup> and clothes hanger<sup>2</sup> are maybe the most convenient ways of transporting your belongings with care when no one is sitting on the rear bench seat.

- 01 Basic module
- 02 Folding table with cup holder<sup>1</sup>
- 03 Clothes hanger<sup>2</sup>
- 04 Bag hook<sup>2</sup>
- 05 Action camera holder<sup>3</sup>

- 06 Tablet holder for Apple iPad 2-4<sup>4</sup>  
Tablet holder for Apple iPad Air 1-2<sup>4</sup> (similar to the illustration)
- 07 Tablet holder for Apple iPad mini 1-3<sup>4</sup>
- 08 Tablet holder for Samsung Galaxy Tab 3/4<sup>4</sup> 10.1"

<sup>1</sup> The folding table with cup holder must be folded away during your journey if a passenger is sitting in the rear bench seat behind it.

<sup>2</sup> Can only be used if a passenger is not seated in the rear bench seat behind it.

<sup>3</sup> This function depends on the infotainment system in your vehicle. Please observe the notes in your vehicle manual. Videos must not be viewed while driving.

<sup>4</sup> iPad/iPad Air/iPad mini are registered trademarks of Apple Computer International. Galaxy Tab is a registered trademark of Samsung Electronics Co., Ltd.

# Comfort and Protection

## NOTE

The swivelling, lockable arm and 360° rotating bracket with marked degree intervals make it easy to align the camera with the area you wish to view.



## NOTE

Complete flexibility: The swivelling axle lets you use the tablet in both portrait and landscape modes.

# Overview of our **child seats**



**01-02** Rest assured. Your most precious treasures are well secured and sitting comfortably on board in our child seats – from babies onwards. Four thoroughly tested **Volkswagen Genuine Accessories child seat models** (04-08), some with innovative SecureGuard technology and the matching **Volkswagen Genuine Accessories seat cover** (02) for underneath, are available. And also the **Volkswagen Genuine additional interior rear view mirror** (01) that lets you keep an eye on your loved ones at all times.

## NOTE

Thanks to the base station's practical rotation function, the seats can be rotated 90° in both directions.



**03-04** With the innovative Volkswagen Genuine Accessories child seat system, you receive a high level of comfort and flexibility for safely transporting your little ones – from birth to 15 months (83 cm / 13 kg). The system consists of the base station **Volkswagen Genuine Accessories "Flex Base i-SENSE"** (03) and the specially designed **Volkswagen Genuine Accessories "i-Size" infant carrier** (04). Once the base station is attached to the vehicle, the **Volkswagen Genuine Accessories "i-Size" infant carrier** can be easily installed and removed again with just one click, with or without the sun shade. Thanks to the practical 90° rotation function, placing and strapping in, or unstrapping and lifting out your baby literally become "child's play". When the vehicle is moving, the infant carrier faces backwards. In addition to the rotation function, the base station can also be adjusted to one of four tilt angles. A number of safety functions, like the 5-point belt system, make sure that your baby is always secure and comfortable while you're on the road.



# Comfort and Protection

## NOTE

Thanks to the base station's practical rotation function, the seats can be rotated 360°.



**05** The **Volkswagen Genuine Accessories "Dualfix i-Size"** is suitable for newborns and young children up to the age of four years (105 cm / 18 kg). Thanks to the 360° rotation function, the seat can face both forwards and backwards. You are recommended to use the backwards-facing position to transport your child for as long as possible. With twelve seat positions and a number of adjustment options, the seat grows with your child, making it your reliable companion for a number of years. Thanks to innovative safety functions like the SICT side collision protection or the Pivot Link ISOFIX system, your young passenger is always well protected, even in the event of an accident. The support bracket, which can be adjusted by 8°, can be adapted flexibly in line with the backrest, offering your child up to 10% more legroom if necessary.

**06** The **Volkswagen Genuine Accessories "TRIFIX i-Size"** is the first child seat after the infant carrier, because it is ideally suited to the needs of children between 76 and 105 cm. Thanks to the built-in ISOFIX and Top Tether fittings, it is easy and convenient to install. The enhanced seat cushion ensures that your child has enough space while they grow – from 15 months to around four years old (76-105 cm/ up to 18 kg). A total of four adjustable positions offer a high level of comfort for your little ones. Thanks to innovative safety functions like the SICT side collision protection, the V-shaped head restraint and the Pivot Link ISOFIX system, forces of impact are cushioned in the event of an accident – after all, your child's safety is always the number one priority. The ISOFIX connectors are integrated directly into the "TRIFIX iSize" and leave the infant carrier and base free for little brothers or sisters.

**07-08** Your children aged 3½ to 11 years (100-150 cm/ 15 to 36 kg) always enjoy comfortable and safe journeys in the **Volkswagen Genuine Accessories "KIDFIX i-Size"** (07). Thanks to the soft, padded fabric cover and the ventilation holes in the seat, your little ones enjoy a comfortable temperature during every journey. Thanks to various safety features, such as the special seat frame, the optimised seat belt guides at the top and bottom, and the padded head restraint, your child is not only well secured at all times, but also very comfortable. Another of the safety features is the innovative SecureGuard, which provides extra protection to your child's stomach thanks to an additional fourth seat belt fastening. The backrest can be removed and ensures more flexibility for children over 138 cm. For safety reasons, however, the backrest should remain attached to the seat as long as possible. Thanks to the seat's slim design, up to three "KIDFIX i-Size" seats can be installed next to one another, depending on the vehicle. The child seat is also available in an extra sporty GTI version (08) – with the same high standard of comfort and safety.



01

02

03

04

05

06

07

08

09

**01** Care for and protect your precious Volkswagen at all times – Volkswagen Accessories has the made-to-measure products to let you do so. Our **Volkswagen Genuine care and cleaning products** have been developed to work ideally together both in and on the vehicle. For long-term, effective vehicle care, which protects both the material and the environment. Please refer to page 46 for more information on the individual products, as well as our seasonal care and cleaning sets.

**02** The **Volkswagen Genuine first aid kit** meets the legal requirements of section 35h of the German Road Traffic Licensing Regulations and DIN 13 164, and is ideal in the event of an emergency.

**03** This **5-litre fuel canister** helps you bridge the distance to the next service station.

**04** The **Volkswagen Genuine “Evolution” emergency hammer** with seat belt knife and ceramic hammer head gives you the good feeling of being able to help yourself in an emergency.

**05** Finally bid farewell to ice and snow with the **Volkswagen Genuine ice scraper**, and free your Volkswagen of wintry obstacles in an instant. Also available as a version with telescopic rod or snow brush.

**06** This intelligently-designed **Volkswagen Genuine warning triangle** is ECE-certified, requires minimal storage space, and can be set up easily and quickly thanks to its swivelling metal foot.

**07** The **Volkswagen Genuine breakdown assistance safety package** comes into its own in the event of a breakdown. It includes a sensible selection of products in a hard-wearing bag.

**08** The **Volkswagen Genuine fire extinguisher** containing 1 kg of extinguishing powder ensures that you are well prepared in the event of an emergency, such as a vehicle fire. A **holder** (not shown) to securely fix it in the footwell is available separately.

**09** Absolutely necessary and required by law: the orange-coloured and fluorescent **Volkswagen Genuine warning vest**<sup>1</sup> with Volkswagen lettering and reflective signal stripes.

<sup>1</sup> As of 1 July 2014, all drivers in Germany are required by law to carry a safety vest in their vehicle (with the exception of motorcycles and mobile homes); and in other European countries, a safety vest must be carried for all vehicle occupants.

# Comfort and Protection



**10** The innovative solution for cleanliness you can feel. The refillable **Volkswagen Genuine display cleaner 2-in-1** combines a cleaning spray and microfibre cloth. Simply practical! The display cleaner can be topped up and re-used again and again. Good for the environment and your wallet.



**11** The perfect partner when out and about. The practical **Volkswagen Genuine emergency charging cable** including storage bag lets you simply charge your electric vehicle on a normal household socket even without a charging station<sup>1</sup>. This lets you continue your journey to the nearest charging station. The use of a home charging station is recommended for fully charging your vehicle overnight at home. The practical **folding box** is ideal for transporting the emergency charging cable in the luggage compartment.



**12** Small animals – big impact. If martens chew on a vehicle's ignition cables or electric systems, they can leave it at risk of breaking down, leading to expensive repairs. Effectively prevent these pests in advance with effective **vermin repellent** products – from preventively effective deterrent spray<sup>2</sup> to electronic products. Refer to page 47 for an overview of all products.

<sup>1</sup> The socket needs to be in perfect technical working order and have been professionally installed.

<sup>2</sup> Use vermin repellent spray safely. Always read the label and product information before use.

# Product Overview **Comfort and Protection**

Heading	Page	Article name	Article number	Price	
<b>Luggage compartment systems</b>	35	<b>Luggage compartment plug-in module</b>			
		- For the Golf Sportsvan, Tiguan, Tiguan Allspace	000-061-166		
			- For the ID.3, ID.4, T-Cross, T-Roc, Golf, Golf Alltrack, Passat Estate, Passat Alltrack, Polo, Touareg	000-061-166-A	
	35	<b>Luggage net</b> , for the lashing eyes in the luggage compartment			
		- For the Golf Estate, T-Roc, T-Roc Cabriolet, for raised luggage compartment floor	1K9-065-111		
		- For the Touran 5-seater	1T0-065-110		
		- For the Touran 7-seater, Touareg	1T0-065-111		
		- For the Arteon, Arteon Shooting Brake, Passat	3C5-065-110		
		- For the Golf Estate, Golf Alltrack, Passat, Passat Estate, Passat Alltrack	3C9-065-110		
		- For the Polo, ID.3, ID.4, T-Cross, T-Roc, Golf, Golf GTI, Golf Sportsvan, Tiguan, Tiguan Allspace	5N0-065-111		
<b>Comfort</b>	35	<b>Waste container</b> , for cup holders in the centre console	000-061-142		
	35	<b>Cool and thermos box</b>	000-065-400-F		
	36	<b>"Clean Solution" waste bag</b> , including 2 rolls of waste bags	000-061-107		
	36	<b>"Snakey" headrest hook<sup>1</sup></b> , black (2x)	000-061-126-A -041		
	36	<b>LED reading light</b> , with swan neck, powered by the 12 V-vehicle socket	000-069-690-G		
	37	<b>"dfreeze" auxiliary heater controller</b> , for control of the auxiliary heater by smartphone app	000-054-929-D		
	37	<b>Cruise control system<sup>2</sup></b>	on request		

<sup>1</sup> Not for vehicles with electric headrests.

<sup>2</sup> Further information on models, specifications and prices is available from your Volkswagen dealership.

<sup>3</sup> For all vehicles with headrest struts. Not for module seats.

<sup>4</sup> iPhone, iPod, iPad, iPad mini and iPad Air are registered trademarks of Apple Computer International.

Samsung Galaxy Tab is a registered trademark of Samsung Electronics Co. Ltd.

<sup>5</sup> Please contact your Volkswagen dealership for further information on using the electrical emergency charging cable with your vehicle.

<sup>6</sup> Use vermin repellent spray safely. Always read the label and product information before use.



# Comfort and Protection

Heading	Page	Article name	Article number	Price
	38	<b>Modular travel &amp; convenience system<sup>3</sup></b>		
		- Basic module	000-061-122	
		- Folding table with cup holder	000-061-124	
		- Clothes hanger	000-061-127-B	
		- Bag hook	000-061-126-B	
		- Action camera holder	000-061-125-J	
		- Tablet holder for iPad 2-4 <sup>4</sup>	000-061-125-A	
		- Tablet holder for iPad Air 1-2 <sup>4</sup>	000-061-125-E	
		- Tablet holder for iPad mini 1-3 <sup>4</sup>	000-061-125-B	
		- Tablet holder for Samsung Galaxy Tab 3/4 <sup>4</sup> 10.1"	000-061-125-D	
		- Universal tablet holder	000-061-125-N	
<b>Child seats and accessories</b>	40	<b>Seat cover, with long back section</b>	000-019-819-C	
	40	<b>Additional interior rear view mirror</b>	000-072-549-A	
	40	<b>Infant carrier "i-SIZE"</b>	11A-019-900	
	40	<b>"Flex Base i-SENSE"</b>	11A-019-907	
	41	<b>"Dualfix i-SIZE"</b>	11A-019-902	
	41	<b>"TRIFIX i-SIZE"</b>	11A-019-909	
	41	<b>"KIDFIX i-SIZE"</b>	11A-019-906	
	41	<b>„KIDFIX i-SIZE“ GTI</b>	5HV-019-906	

This table shows the available options with the individual products and our current vehicle models. Please contact your Volkswagen dealership for more information as to whether the options can be installed on your particular vehicle. The specified fitting times are guidelines, 100 TU (time units) correspond to one hour. The prices listed do not include installation costs. Valid from January 2022.

# Product Overview **Comfort and Protection**

Heading	Page	Article name	Article number	Price
<b>Care and cleaning</b>	not shown	<b>Cockpit and plastic cleaner</b> , pump bottle 500 ml	000-096-307-G	
	not shown	<b>Wheel rim cleaner</b> , gel, pump bottle 500 ml	000-096-304-J	
	not shown	<b>Carpet and upholstery cleaner</b> , pump bottle 500 ml	000-096-301-B	
	not shown	<b>Insect remover</b> , pump bottle 500 ml	000-096-300-B	
	not shown	<b>Leather care product</b> , 250 ml	000-096-306-B	
	not shown	<b>Soft leather cleaner</b> , 250 ml	000-096-323-J	
	not shown	<b>Window cleaner concentrate</b> , 250 ml dispenser bottle	000-096-311-M	
	not shown	<b>Chrome and aluminium care product</b> , 250 ml	000-096-319-D	
	not shown	<b>Summer ready-to-use window cleaner</b> , canister 3,000 ml	000-096-321-B	
	not shown	<b>Winter ready-to-use window cleaner</b> , canister 3,000 ml	000-096-311-L	
	not shown	<b>Spring care set</b> : 1 cockpit cleaner (500 ml), 1 insect remover (500 ml), 1 wheel rim cleaner (500 ml), 1 wheel brush, 1 microfibre cloth, 1 cockpit and plastic cleaner	000-096-355-D	
	not shown	<b>Care set</b> : 1 insect removal sponge, 1 universal sponge, 1 car sponge, 1 window cloth	000-096-166-A	
	not shown	<b>Wheel care set</b> : 1 wheel rim cleaner (500 ml), 1 rim brush, 1 microfibre cloth	000-096-353-D	
	not shown	<b>De-icer</b> , pump bottle 500 ml	000-096-322-F	
	not shown	<b>Rubber care product</b> , care stick 75 ml	000-096-310-E	
	not shown	<b>Anti-frost concentrate</b> , to -70 °C, bottle 500 ml	000-096-320-GJ	
	43	<b>2-in-1 display cleaner</b> , refillable		
		- Colour: Dark blue	000-096-311-AD-530	
		- Colour: Yellow	000-096-311-AD-655	
		- Colour: Light grey	000-096-311-AD-573	
	- Colour: Pink	000-096-311-AD-L19		
	- Colour: Turquoise	000-096-311-AD-3H1		
not shown	<b>Refill pouch for 2-in-1 display cleaner</b> , 200 ml	000-096-311-AE		

<sup>1</sup> Not for vehicles with electric headrests.

<sup>2</sup> Further information on models, specifications and prices is available from your Volkswagen dealership.

<sup>3</sup> For all vehicles with headrest struts. Not for module seats.

<sup>4</sup> iPhone, iPod, iPad, iPad mini and iPad Air are registered trademarks of Apple Computer International.

Samsung Galaxy Tab is a registered trademark of Samsung Electronics Co. Ltd.

<sup>5</sup> Please contact your Volkswagen dealership for further information on using the electrical emergency charging cable with your vehicle.

<sup>6</sup> Use vermin repellent spray safely. Always read the label and product information before use.

# Comfort and Protection

Heading	Page	Article name	Article number	Price
<b>Service</b>	42	<b>First aid kit</b>	6R0-093-108	
	42	<b>Fuel canister</b>	000-093-060	
	42	<b>Emergency hammer "Evolution"</b>	000-093-101-B	
	42	<b>Ice scraper</b>		
		- Telescopic handle	000-096-010	
		- Snow brush	000-096-010-A	
	42	<b>Warning triangle</b>	000-093-055-AA	
	42	<b>Breakdown assistance safety package</b>	000-093-059-M	
	42	<b>Fire extinguisher, 1 kg extinguishing agent</b>	000-016-995	
	not shown	<b>Holder for fire extinguisher, fits in the footwell, for 1-kg container</b>	000-016-997	
	42	<b>High-visibility waistcoat, colour: Orange</b>	000-093-056-H -FSX	
<b>Charging cable</b>	43	<b>Electrical emergency charging cable, for electric vehicles<sup>5</sup></b>		
		- Mode 2, 230 V 1 AC, max. 2.3 kW, EU	000-054-412	
		- Mode 3, 230/400 V 3N AC, max. 22 kW, EU	000-054-412-S	
	43	<b>Folding box</b>	000-054-410-A	
<b>Vermin repellent</b>	not shown	<b>Vermin repellent spray<sup>6</sup>, creates an unpleasant smell for vermin, use every 4-6 weeks</b>	000-054-780-A	
	not shown	<b>Ultrasonic protection, devices that produce unpleasant ultrasonic sounds for vermin</b>		
		- M2700, for fixed installation, waterproof, fitting time approx. 25 TU	000-054-651-A	
		- M8700, mobile device, battery-powered, waterproof, fitting time approx. 5 TU	000-054-650-E	
		- M7500, for fixed installation, ultrasonic sounds also can be heard outside of the engine compartment as they resonate against the bonnet, fitting time approx. 25 TU	000-054-650-H	
	not shown	<b>Ultrasonic protection and high-voltage, generates both ultrasonic sounds and high voltage deterrents</b>		
		- M4700, 1 x ultrasonic and 6 high-voltage plates, for small engine compartments, fitting time approx. 100 TU	000-054-650-F	
		- M5700N, 6 x ultrasonic and 6 flexible high-voltage plates, for wide engine compartments and SUVs, fitting time approx. 50 TU	000-054-650-G	
		- M4700B, with +/- high-voltage brushes for transmitting power through the insulating fur, fitting time approx. 100 TU	000-054-650-J	
		- M9700, with ultrasonic and high-voltage, revolutionary multi-contact high-voltage brush system, waterproof, battery-powered with battery display	000-054-650-K	
	- M9900, with ultrasonic and high-voltage, revolutionary multi-contact high-voltage brush system, innovative energy management thanks to "Sleep mode", waterproof, battery-powered with battery display	000-054-650-N		

This table shows the available options with the individual products and our current vehicle models. Please contact your Volkswagen dealership for more information as to whether the options can be installed on your particular vehicle. The specified fitting times are guidelines, 100 TU (time units) correspond to one hour. The prices listed do not include installation costs. Valid from January 2022.

# Wheels







01



02



03

**01-06** Personalise your Volkswagen down to the smallest detail with the **Volkswagen Genuine valve cap set (01)** for aluminium or rubber/ metal valves. The ideal anti-theft protection for your precious alloy wheels – the **Volkswagen Genuine wheel locking set (02)**. Protect the high-quality wheels of your Volkswagen with the **Volkswagen Genuine tyre bag set (03)**. There are different versions of the set for different tyre sizes. The absolute highlight for your Volkswagen. The **Volkswagen Genuine dynamic hub caps (04)** with an embossed Volkswagen logo impress with their dynamic spinning function and, even at a speed of 200 km/h, guarantee that the logo is always perfectly positioned while driving and in any parking position. Keep a real 'grip' on the road. Even in wintry conditions. **Volkswagen Genuine "Snox" Snow chains (powered by pewag)<sup>1</sup> (05)** and **Volkswagen Genuine "Servo SUV" and "Servo 9" snow chains (powered by pewag)<sup>1</sup> (06)** feature an innovative fastening system and an automatic tensioning function. Ensuring you reach your destination safe and sound even in snowy conditions.



04



05



06



<sup>1</sup> Please enquire at your Volkswagen dealership whether the options can be installed on your particular vehicle.

# Accessories for **wheels**

Heading	Page	Article name	Article number	Price
<b>Wheel accessories</b>	49	<b>Dynamic hub caps<sup>1</sup></b> , 1 set = 4x		
		- With the old Volkswagen logo	000-071-213-C	
		- With the new Volkswagen logo	000-071-213-D	
	49	<b>Tyre bag set</b> , 1 set = 4x		
		- for wheels up to 18 inches	000-073-900	
		- For wheels up to approx. 21 inches	000-073-900-E	
	49	<b>Valve cap set<sup>2</sup></b> , 1 set = 4x		
		- For aluminium valves	000-071-215-E	
		- For rubber/brass valves	000-071-215-D	
	49	<b>Wheel bolt locking set</b> , black, 1 set = 4x		
- Universal, not for the ID.3, ID.4, up!, e-up!, Sharan, Touareg		000-071-597-D		
- For the up! and e-up!		000-071-595		
- For the ID.3 and ID.4		3CN-071-597		
<b>Snow chains</b>	49	<b>"Snox" snow chain (powered by pewag)<sup>3</sup></b> , 1 set = 2x		
		- For tyre sizes from 165/70 R14 to 195/45 R15	000-091-387-BE	
		- For tyre sizes from 185/60 R14 to 185/55 R15	000-091-387-BF	
		- For tyre sizes from 195/60 R14 to 205/45 R16	000-091-387-BG	
		- For tyre sizes from 195/70 R15 to 215/45 R17	000-091-387-BH	
		- For tyre sizes from 215/60 R16 to 225/45 R18	000-091-387-BJ	

<sup>1</sup> Use of the dynamic hub cap depends on the wheel. Please ask your Volkswagen dealership.

<sup>2</sup> Please contact your Volkswagen dealership for more information as to whether the options can be installed on your particular vehicle.

<sup>3</sup> Use of the snow chains depends on the wheel. Please ask your Volkswagen dealership.

Heading	Page	Article name	Article number	Price
	49	<b>"Servo SUV" snow chain (powered by pewag)<sup>3</sup>, 1 set = 2x</b>		
		- For tyre sizes 215/65 R17	000-091-387-AG	
		- For tyre sizes 235/70 R17	000-091-387-BB	
		- For tyre sizes 255/60 R18 and 255/55 R19	000-091-387-BC	
	49	<b>"Servo 9" snow chain (powered by pewag)<sup>3</sup>, 1 set = 2x</b>		
		- For tyre sizes 185/65 R15 and 185/60 R16	000-091-387-BA	
		- For tyre sizes 205/60 R16	000-091-387-BD	
		- For tyre sizes 215/55 R17 and 215/60 R16	000-091-387-AT	
		- For tyre size 215/55 R18	000-091-387-BK	
		- For tyre sizes 235/55 R19 to 255/50 R19	000-091-387-BN	

This table shows the available options with the individual products and our current vehicle models. Please contact your Volkswagen dealership for more information as to whether the options can be installed on your particular vehicle. The specified fitting times are guidelines, 100 TU (time units) correspond to one hour. The prices listed do not include installation costs. Valid from January 2022.





# Mobile and flexible

## Online and easy

Experience the entire world of Volkswagen Accessories online – whenever and wherever you like. Find out about our products, hear the latest news first via social media, or conveniently browse through our world of accessories. Have fun!



**YouTube** – the official Volkswagen channel with a vast range of fun and informative videos, covering both your Volkswagen and the Genuine Accessories range. [www.youtube.de/myvolkswagen](http://www.youtube.de/myvolkswagen)



We'll stay in touch and show you what we like. News, opinions, photos, videos, friends, fans. [facebook.com/VolkswagenDE](https://facebook.com/VolkswagenDE)



Visit our website at [volkswagen.de](http://volkswagen.de)



Visit us online at [instagram.com/volkswagen\\_de](https://instagram.com/volkswagen_de)



# **Accessories** for the Touareg

Volkswagen Zubehör GmbH · Dreieich · [volkswagen.de](http://volkswagen.de)  
Errors and changes excepted · March 2022

The offers with regard to scope of delivery, appearance, performance, dimensions, weights and pictures, and all information relating to fittings and technical data, correspond to the knowledge available at the date of catalogue production. We reserve the right to make changes to the scope of delivery, design and colour without advance notification within the context of further development.

Your Volkswagen dealership